

Finish marshal and river closure enforcement

Crews proceeding upstream to race

Racing crews

Crews returning upstream after racing

Casualty landing place

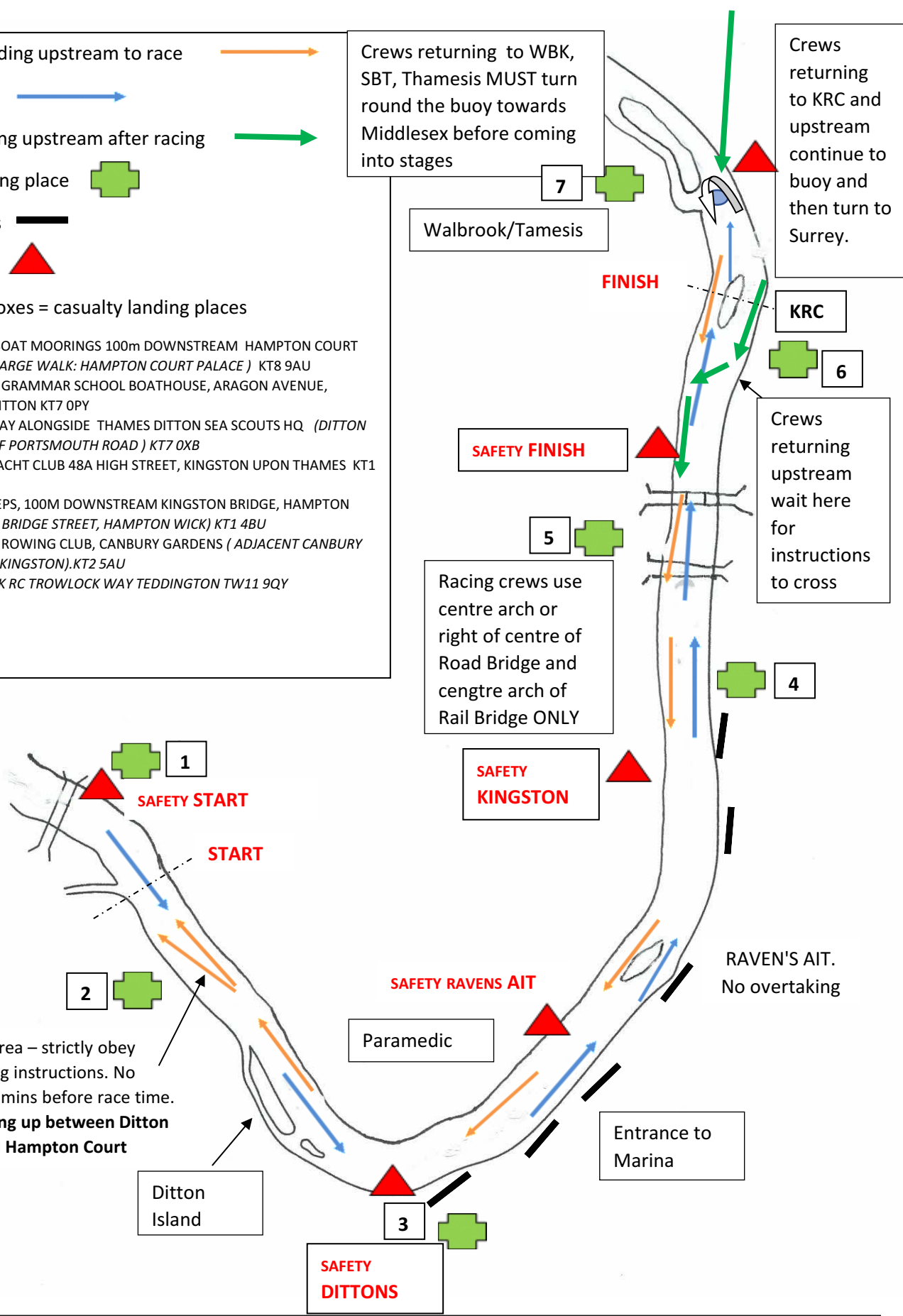
Moored boats

Safety Boats

Crews returning to WBK, SBT, Thamesis MUST turn round the buoy towards Middlesex before coming into stages

Crews returning to KRC and upstream continue to buoy and then turn to Surrey.

- Numbers in boxes = casualty landing places
- 1) THE HIRE BOAT MOORINGS 100m DOWNSTREAM HAMPTON COURT BRIDGE ( *BARGE WALK: HAMPTON COURT PALACE* ) KT8 9AU
  - 2) KINGSTON GRAMMAR SCHOOL BOATHOUSE, ARAGON AVENUE, THAMES DITTON KT7 0PY
  - 3) THE SLIPWAY ALONGSIDE THAMES DITTON SEA SCOUTS HQ ( *DITTON REACH, OFF PORTSMOUTH ROAD* ) KT7 0XB
  - 4) MINIMA YACHT CLUB 48A HIGH STREET, KINGSTON UPON THAMES KT1 1HN
  - 5) PUBLIC STEPS, 100M DOWNSTREAM KINGSTON BRIDGE, HAMPTON WICK *OLD BRIDGE STREET, HAMPTON WICK* ) KT1 4BU
  - 6) KINGSTON ROWING CLUB, CANBURY GARDENS ( *ADJACENT CANBURY GARDENS KINGSTON* ).KT2 5AU
  - 7) WALBROOK RC TROWLOCK WAY TEDDINGTON TW11 9QY



You MUST pass between the buoys on Ditton Bend and the Middlesex bank when navigating upstream

Teddington Head 2023 - Course Map

