

Boating Conditions for Safe Rowing - Can I Go Out?

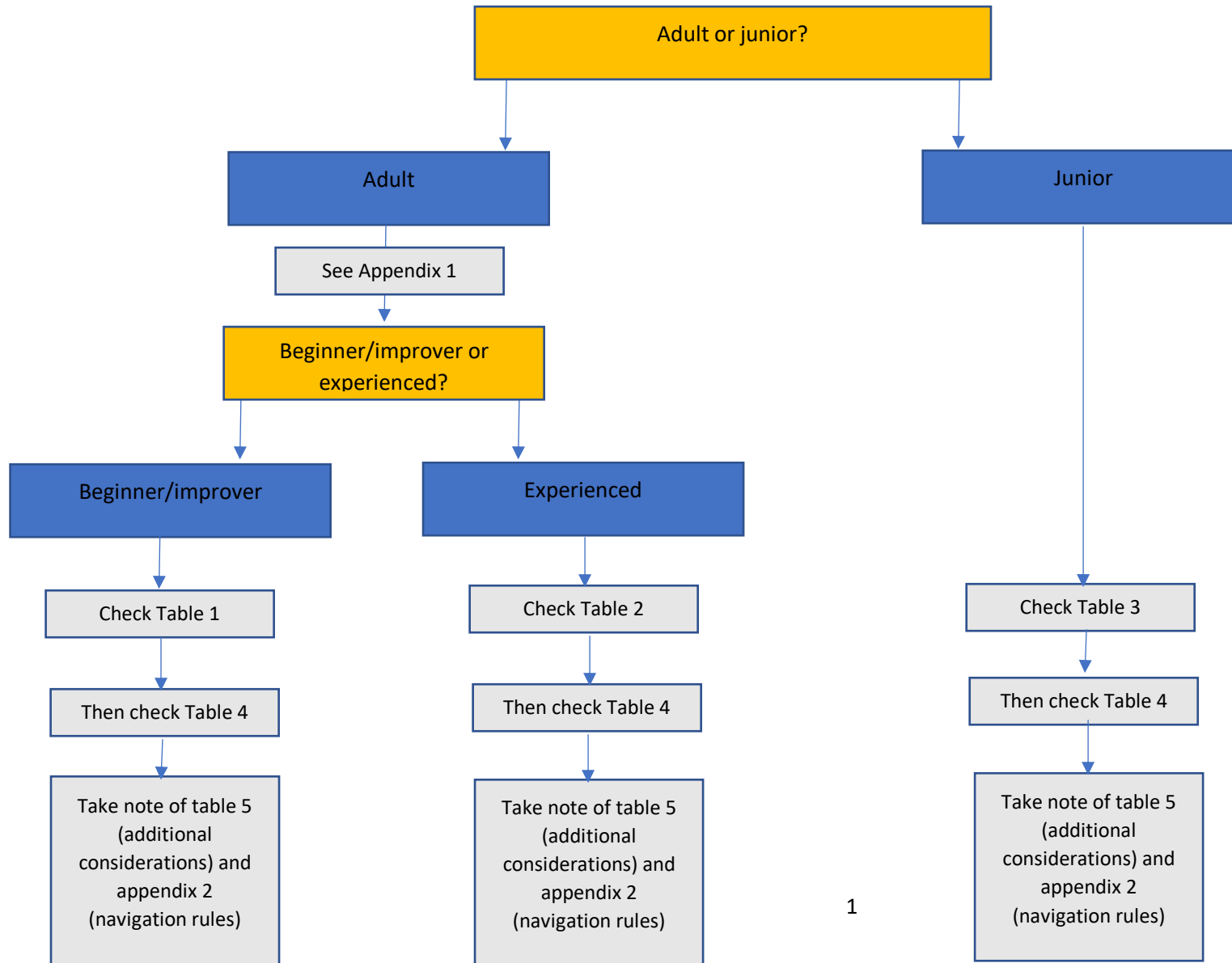


Table 1: Adult Beginners/Improvers – to be read in conjunction with further risk assessment criteria, table 4.

ADULT BEGINNERS/IMPROVERS*	Environment Agency (EA) Board Warning Colour Status Teddington Lock to Molesey Lock			
	NO WARNING COLOUR PROVIDED	YELLOW	RED (flow rate < 250 m ³ s ⁻¹)	BLACK (red boards, flow rate > 250 m ³ s ⁻¹)
DURING DAYLIGHT				
1x	coach in launch or DRS**	NO	NO	NO
2x / 2-	club approved steersmen or coach in launch or DRS**	NO	NO	NO
4x / 4-	club approved steersmen or coach in launch or DRS**	Under DRS**	NO	NO
4x+ / 4+	club approved cox or coach in launch or DRS**	Under DRS**	NO	NO
8+ / 8x+	club approved cox or coach in launch or DRS**	Under DRS**	NO	NO

*See appendix 1

**Dedicated Rowing Supervision in launch, one launch per boat in close proximity at all times

ADULT BEGINNERS/IMPROVERS*	Environment Agency (EA) Board Warning Colour Status Teddington Lock to Molesey Lock			
	NO WARNING COLOUR PROVIDED	YELLOW	RED (flow rate < 250 m ³ s ⁻¹)	BLACK (red boards, flow rate > 250 m ³ s ⁻¹)
DURING DARKNESS				
1x	NO	NO	NO	NO
2x / 2-	NO	NO	NO	NO
4x / 4-	NO	NO	NO	NO
4x+ / 4+	NO	NO	NO	NO
8+ / 8x+	NO	NO	NO	NO

*See appendix 1

Table 2: Experienced adult rowers – to be read in conjunction with further risk assessment criteria, table 4.

ADULTS (EXPERIENCED)*	Environment Agency (EA) Board Warning Colour Status Teddington Lock to Molesey Lock			
DURING DAYLIGHT	NO WARNING COLOUR PROVIDED	YELLOW	RED (flow rate < 250 m ³ s ⁻¹)	BLACK (red boards, flow rate > 250 m ³ s ⁻¹)
1x	club approved steersmen or coach or DRS**	club approved steersmen or coach or DRS**	DRS**	NO
2x / 2-	club approved steersmen or coach or DRS**	club approved steersmen or coach or DRS**	DRS**	NO
4x / 4-	club approved steersmen or coach or DRS**	club approved steersmen or coach or DRS**	DRS**	NO
4x+ / 4+	club approved cox or coach or DRS**	club approved cox or coach or DRS**	DRS**	NO
8+ / 8x+	club approved cox or coach or DRS**	club approved cox or coach or DRS**	DRS**	NO
* See appendix 1				
**Dedicated Rowing Supervision in launch, maximum 3 boats in close proximity at all times				
DURING DARKNESS***	NO WARNING COLOUR PROVIDED (outing only permitted with Captain's permission)	YELLOW (outing only permitted with Captain's permission)	RED (flow rate < 250 m ³ s ⁻¹)	BLACK (red boards, flow rate > 250 m ³ s ⁻¹)
1x	club approved steersmen or coach or DRS** NO lone single scullers	club approved steersmen or coach or DRS** NO lone single scullers	NO	NO
2x / 2-	club approved steersmen or coach or DRS**	club approved steersmen or coach or DRS**	NO	NO
4x / 4-	club approved steersmen or coach or DRS**	club approved steersmen or coach or DRS**	NO	NO
4x+ / 4+	club approved cox or coach or DRS**	club approved cox or coach or DRS**	NO	NO
8+ / 8x+	club approved cox or coach or DRS**	club approved cox or coach or DRS**	NO	NO

**Dedicated Rowing Supervision in launch, maximum 3 boats in close proximity at all times

***All crews boating at night should wear reflective tops/high vis tops and no dark clothing. All crews boating at night should show a white solid light on the stern and bow NOT fastened to a rigger.

Table 3: Juniors – to be read in conjunction with further risk assessment criteria, table 4.

Juniors	Environment Agency (EA) Board Warning Colour Status Teddington Lock to Molesey Lock			
DURING DAYLIGHT	NO WARNING COLOUR PROVIDED	YELLOW	RED (flow rate < 250 m ³ s ⁻¹)	BLACK (red boards, flow rate > 250 m ³ s ⁻¹)
1x	Only accompanied by coach in launch, and with further risk criteria (table 4) having been met	NO	NO	NO
2x / 2-	Only accompanied by coach in launch, and with further risk criteria (table 4) having been met	Only accompanied by coach in launch, & with further risk criteria (table 4) having been met. Extra care in Risk Assessment on Yellow flow increasing	NO	NO
4x / 4-	Only accompanied by coach in launch, and with further risk criteria (table 4) having been met	Only accompanied by coach in launch, and with further risk criteria (table 4) having been met. Extra care in Risk Assessment on Yellow flow increasing	NO	NO
4x+ / 4+	Only accompanied by coach in launch, and with further risk criteria (table 4) having been met	Only accompanied by coach in launch, and with further risk criteria (table 4) having been met. Extra care in Risk Assessment on Yellow flow increasing	NO	NO
8+ / 8x+	Only accompanied by coach in launch, and with further risk criteria (table 4) having been met	Only accompanied by coach in launch, and with further risk criteria (table 4) having been met. Extra care in Risk Assessment on Yellow flow increasing	NO	NO

Table 3: Juniors (continued) – to be read in conjunction with further risk assessment criteria, table 4.

Juniors	Environment Agency (EA) Board Warning Colour Status Teddington Lock to Molesey Lock			
DURING DARKNESS	NO WARNING COLOUR PROVIDED	YELLOW	RED (flow rate < 250 m ³ s ⁻¹)	BLACK (red boards, flow rate > 250 m ³ s ⁻¹)
1x	NO	NO	NO	NO
2x / 2-	NO	NO	NO	NO
4x / 4-	Only accompanied by coach in launch, subject to: i) Launch being equipped with a search floodlight and grab sufficient number of handles on the side of launch hull. ii) Fluorescent outer apparel must be worn. iii) The risk assessment, table 4 on page 5, must be completed by the accompanying coach	Only with Captain/safety advisor approval and accompanied by coach in launch, subject to: i) Launch being equipped with a search floodlight and grab sufficient number of handles on the side of launch hull. ii) Fluorescent outer apparel must be worn. iii) The risk assessment, table 4 on page 5, must be completed by the accompanying coach	NO	NO
4x+ / 4+	Only accompanied by coach in launch, subject to: i) Launch being equipped with a search floodlight and grab sufficient number of handles on the side of launch hull. ii) Fluorescent outer apparel must be worn. iii) The risk assessment, table 4 on page 5, must be completed by the accompanying coach	Only with Captain/safety advisor approval and accompanied by coach in launch, subject to: i) Launch being equipped with a search floodlight and grab sufficient number of handles on the side of launch hull. ii) Fluorescent outer apparel must be worn. iii) The risk assessment, table 4 on page 5, must be completed by the accompanying coach	NO	NO
8+ / 8x+	NO – High Risk of unmanageable situation	NO – High Risk of unmanageable situation	NO	NO

Table 4: FURTHER RISK ASSESSMENT Criteria: Any black = no rowing 3 reds = no rowing

River Flow Rate /m ³ sec ⁻¹	Below 80	90	100	110	120	130	140	150	160	170	180	190	200	210	220	230	240	250	>250
Water Temp °C	20	19	18	17	16	15	14	13	12	11	10	9	8	7	6	5	4	3	<2
Air temp °C	15 and above	15	14	13	12	11	10	9	8	7	6	5	4	3	2	1	0	0 - -2	<-2
Wind Speed mph (max gusts)	1	2	3	4	5	6	7	8	9	10	11	12	13	14	15	15 - 20	20 - 25	25 - 30	>30
Wind direction	S	SE	SW	W	E	NW	NE	N											

Information on all of these criteria can be found on the home page of the Walbrook club website: <http://www.walbrookrc.co.uk/>

On yellow and red boards the Risk Assessment Form form, which can be found on the left hand side of the boatshed when you enter, below the green letterbox, should be completed and the form placed in the letterbox:



WALBROOK ROWING CLUB
Risk Assessment Form for Rowing on Red and Yellow Boards

Date	Time	
Environmental Conditions		
EA River Status (from EA web site)	Red Yellow (increasing) Yellow (decreasing) Clear	
River Flow Rate (from EA notification)	Time of last notification	Flow m ³ s ⁻¹ =
Water temperature (from EA notification)	Time	°C
Air temperature	Data from	
Wind strength and direction	Data from	
Water description	Flat calm, ripples etc	
Visibility	Can the far bank be seen clearly?	
Weather forecast	Source	
Other hazards		
Now check the Red/yellow coding system on the noticeboard?. Have you scored less than 3 red areas?	YES NO	
Mitigation Controls		
Coaching launch in attendance Yes/No	Driver RYA2/Walbrook proficiency test	Which launch
Launch bag taken yes/no	Mobile phone in launch yes/no	Person notified of expected return time
Remain clear of Weir/Bridges	Crews told to turn at upstream end of Trowlock Island Yes/No	Crew only allowed between Bridge/Ravens Ait and Trowlock Island? Yes/No
All crew members agree that they are happy to boat? Yes/No	Steersman – name:-	Crew competency – who is in the boat and level
Boat type/ name of boat		
Risk assessment undertaken by:-	1)	Position
Agreement to boat from	1) 2)	Position
Post outing feedback – was the outing worthwhile?		

Table 5: Additional considerations

ADVERSE CONDITON	CONSIDERATIONS		ACTION	RISKS
STRONG WINDS	WILL NAVIGATION BE DIFFICULT?	WILL ROWING BE DIFFICULT?	IF YES DON'T GO AFLOAT	SWAMPING, CAPSIZE, COLLISION
RAIN / SNOW	HOW COLD IS IT?	WILL HYPOTHERMIA BE A RISK?	IF YES DON'T GO AFLOAT	HYPOTHERMIA
RAIN / SNOW	IS VISIBILITY AFFECTED?	WILL NAVIGATION BE DIFFICULT?	IF YES DON'T GO AFLOAT	CAPSIZE, COLLISION
AIR TEMPERATURE	HOW COLD IS IT?	WILL HYPOTHERMIA BE A RISK?	IF YES DON'T GO AFLOAT	HYPOTHERMIA
WATER TEMPERATURE	HOW COLD IS IT?	WILL HYPOTHERMIA BE A RISK?	IF YES DON'T GO AFLOAT	HYPOTHERMIA
LIGHTNING	SEE 'ROWSAFE' 30s RULE		IF YES DON'T GO AFLOAT	ELECTROCUTION
FOG	IS THE FAR BANK OF THE RIVER CLEARLY VISIBLE?		IF NOT DON'T GO AFLOAT	COLLISION
ICE / SNOW ON GROUND	IS IT SAFE TO CARRY THE BOAT TO THE LANDING STAGE?		IF NOT DON'T GO AFLOAT	FALL
DEBRIS IN RIVER	IS THERE DEBRIS IN THE RIVER?		IF YES DON'T GO AFLOAT	CAPSIZE, COLLISION

THE ABOVE LIST DOES NOT COVER EVERY EVENTUALITY, ANY INCIDENT THAT POSES A RISK OF CAPSIZING PRESENTS THE RISK OF DROWNING

Appendix 1 - Definitions:

Adult Beginner:

- on a Learn to Row course /has just completed a learn to row course but who cannot row in time with others
- cannot row well enough to allow an experienced crew to have a normal training outing
- cannot carry out commands (eg back down) without being prompted
- cannot carry out exercises with others

Adult improver:

- can carry out commands quickly and completely and knows what the commands mean. Does not need explanations of what is required
- someone who needs a club approved cox/steersman in attendance
- someone who may have passed the steersman's test but who is not experienced enough to be allowed out on red and yellow boards in charge of a boat
- someone who has not been out on red and yellow boards a minimum of 3 times
- may have raced in good conditions in a crew/has not been in charge of a crew in a race

Experienced adult rower:

- passed the club steersman's test or who has the knowledge for boat handling in strong stream conditions ie on red and yellow
- has had at least 6 months regular rowing and has experienced Red and Yellow conditions under supervision
AND
- can describe how to turn a boat upstream and down-stream in strong stream conditions, wind, bridges
- who has raced

In addition there will also be some subjective judgement by coaches/committee etc in allowing members to boat on different stream conditions

Coach:

- either qualified coach or person approved by club capable of taking out juniors or adult beginners/ improvers as applicable
- coach may be in another rowing boat in general vicinity

Coach in launch

- either qualified coach or person approved by club capable of taking out juniors or adult beginners/ improvers as applicable
- coach in launch will stay in general proximity of the rowing boat but may have several boats under their supervision at once

DRS Dedicated Rowing Supervision

- Club approved launch driver that will stay in immediate proximity to the rowing boat(s). One launch per beginner boat, one launch to a maximum of 3 experienced rower boats.

Appendix 2

Navigation rules:

In line with the reach agreement **do not** at any time:

- turn **less than** 50 yards upstream of Hampton Court Bridge
- turn **less than** 100 yards upstream or downstream of the moored boats on Ditton bend
- turn or stop **less than** 100 yards upstream of the end of ravens Ait
- turn or stop **less than** 50 yards downstream of the end of Ravens Ait
- turn or stop **less than** 100 yards upstream of Kingston Bridge or Railway Bridge
- turn or stop **less than** 50 yards downstream of the railway bridge
- turn or stop on the bend by the sea scouts

When yellow and red boards are showing and rowing is permitted:

- Do not navigate upstream of Hampton Court bridge
- Do not navigate downstream of the downstream end of Trowlock Island